

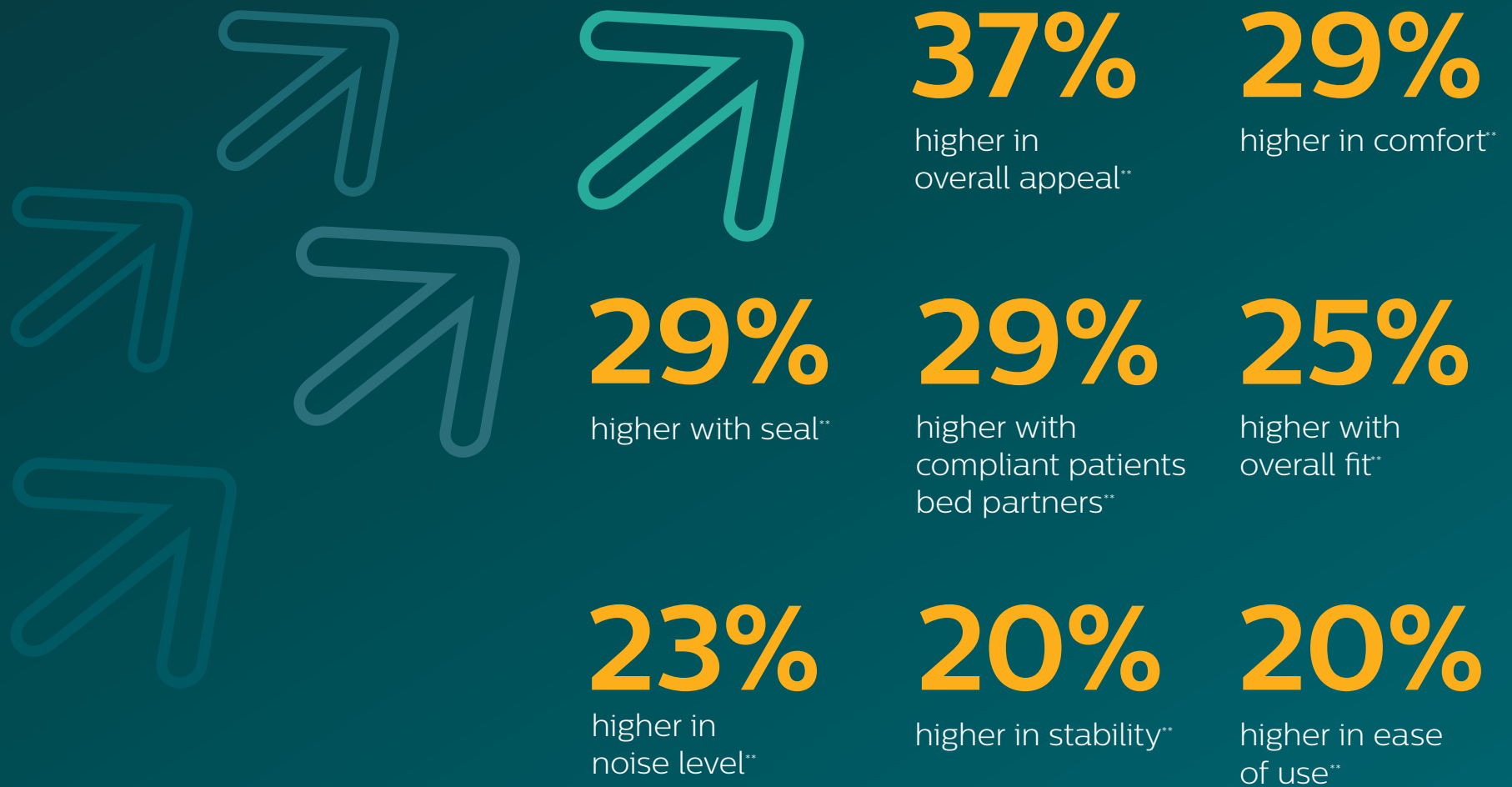
Amara View full face mask

Enjoy the view

4 to 1

New patients prefer Amara View nearly 4 to 1 over Quattro, based on the degree of confinement they feel wearing the masks*

Amara View achieves higher levels of satisfaction than Quattro:



George, a sleep apnea patient from Wheeling, WV.

“Thank the world! You’ll hear people talking about this mask... you’re doing the right thing. The beauty of it is that you are making a difference in people’s lives.”

Forrest, a sleep apnea patient from Oregon.

“With my other masks, usually when I wake up in the morning, I have a huge red mark on my nose. With Amara View, nothing at all, not around my mouth, nose, anything.”

*Philips-Respironics sponsored testing at seven contracted clinical sites for a 2 week X 2 week randomized crossover study with 64 patients new to CPAP. Each patient tried Amara View and either Quattro or AirFit F10. Mask order between the two mask was randomized. Mask comparison responses were collected after the second interval crossover. Statistical significance at 95% confidence, +/- 5% using a one-sample Binomial Test comparing the observed proportion to a 50/50 split. Average comparisons using a 0 to 10 rating score; Among participants expressing a preference of one mask over another; Quattro, p-value = .004

**Philips-Respironics sponsored testing at two contracted clinical sites. Ninety-five compliant Quattro patients rated Quattro and then Amara View after approximately 30 days. Statistical significance at 95% confidence, +/- 5% using paired t-test comparing averages of 0 to 10 rating scores; p-value < .001

